

A2659

SERVICE PARTS LIST

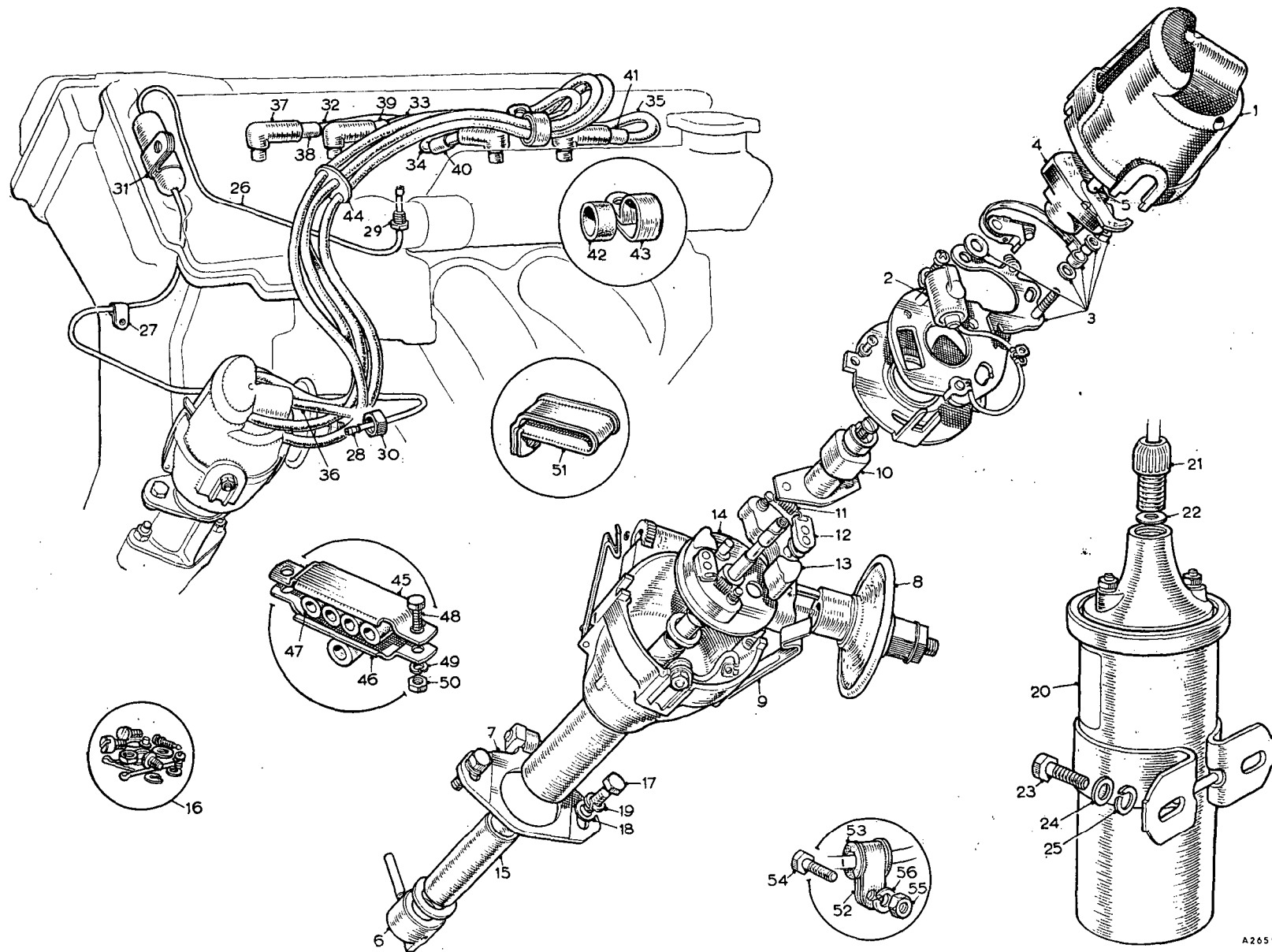
THE M.G. Series MGA TWIN CAM

Item No.	DESCRIPTION	Commencing (E) 101		Qty. per Vehicle		Unit of Issue	Type of Vehicle	MODIFICATIONS			REMARKS
		Part Number	Illus. No.	RHD	LHD			New Part Number	Change Point	Amdt. No.	
IGNITION EQUIPMENT											
DISTRIBUTOR											
1	Distributor	1H811		1	1						
2	Cover	17H5422	B1	1	1						
3	Condenser	17H5421	B2	1	1						
4	Contact set	17H5423	B3	1 set	1 set	1	37H4414	ZCS	01/07/11/2101/211/2107		
5	Rotor arm	7H5086	B4	1	1						
6	Carbon and spring	17H5065	B5	1	1						
7	Dog—driving	17H5118	B6	1	1						
8	Plate—clamping	3H2138	B7	1	1						
9	Vacuum unit	17H5474	B8	1	1			47H5570		4677	
10	Clip for cover	17H5064	B9	2	2						
11	Cam	17H5066	B10	1	1						
12	Spring—automatic advance	37H5272	B11	1 set	1 set	1					
13	Toggle	17H5069	B12	2	2						
14	Weight	17H5095	B13	2	2						
15	Shaft and action plate	37H5273	B14	1	1						
16	Bushing	17H5071	B15	1	1						
17	Sundry parts	17H5106	B16	1 set	1 set	1					
18	Screw—distributor to housing	ZCS0406	B17	2	2						
19	Washer for screw	PWZ104	B18	2	2	12					
20	Washer for screw (spring)	LWZ204	B19	2	2	12					
IGNITION COIL											
21	Coil—ignition	1D1963	B20	1	1						
22	Nut—terminal	3H2695	B21	1	1						
23	Washer for nut	3H2696	B22	1	1						
24	Screw fixing coil to body panel	HZS0505	B23	2	2						
25	Washer for screw (plain)	PWZ105	B24	2	2						
26	Washer for screw (spring)	LWZ205	B25	2	2	24					

SERVICE PARTS LIST

THE M.G. Series MGA TWIN CAM

Item No.	DESCRIPTION	Commencing (E) 101		Qty. per Vehicle		Unit of Issue	Type of Vehicle	MODIFICATIONS			REMARKS	
		Part Number	Illus. No.	RHD	LHD			New Part Number	Change Point	Amdt. No.		
	VACUUM CONTROL											
1	Pipe—ignition control	AEH589	B26	1	1							
2	Clip	2H3271	B27	1	1							
3	Olive	6K649	B28	2	2							
4	Nut (carburettor end)	2A459	B29	1	1							
5	Nut (distributor end)	6K650	B30	1	1	12						
6	Clip for pipe (fuel trap)	PCR0811	B31	1	1							
	H.T. CABLES—SUPPRESSORS											
7	Cable—No. 1 H.T. (27½" long)	45223	B32	A/R	A/R	100' roll					Length increased to 28" Length increased to 28½" Length increased to 32" Length increased to 33"	
8	Cable—No. 2 H.T. (26½" long)	45223	B33	A/R	A/R							
9	Cable—No. 3 H.T. (26½" long)	45223	B34	A/R	A/R							
10	Cable—No. 4 H.T. (25½" long)	45223	B35	A/R	A/R							
11	Cable—coil to distributor (17" long)	45223	B36	A/R	A/R							
12	Suppressor	3H1422	B37	4	4							
13	Sleeve—H.T. cable identity (No. 1)	2H4243	B38	1	1							
14	Sleeve—H.T. cable identity (No. 2)	2H4244	B39	1	1							
15	Sleeve—H.T. cable identity (No. 3)	2H4245	B40	1	1							
16	Sleeve—H.T. cable identity (No. 4)	2H4246	B41	1	1							
17	Grommet for H.T. cable (rubber)	AEH565	B42	1	1							
18	Clip	PCR1411	B43	1	1							
19	Spacer for H.T. cable (4-way)	AEH600	B44	1	1							
20	Cable clamp (top half)		B45	1	1							
21	Cable clamp (bottom half)		B46	1	1							
22	Bush for cable clamp (rubber)		B47	4	4							
23	Set screw for cable clamp		B48	2	2							
24	Washer for set screw (spring)		B49	2	2	12						
25	Nut for set screw		B50	2	2							
26	Clip for ignition cables		B51	2	2							
27	Clip—H.T. lead from coil to L.H. wing valance	PCR0709	B52	1	1							
28	Sleeve (rubber)	ACH8529	B53	1	1							
29	Bolt fixing clip	HBZ0405	B54	1	1							
30	Nut for bolt	FNZ104	B55	1	1							
31	Washer for nut (spring)	LWZ204	B56	1	1	12						



A2659